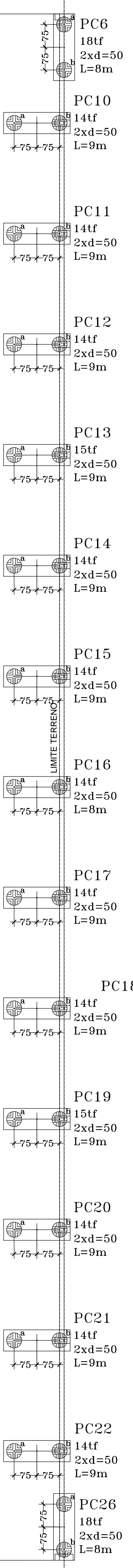
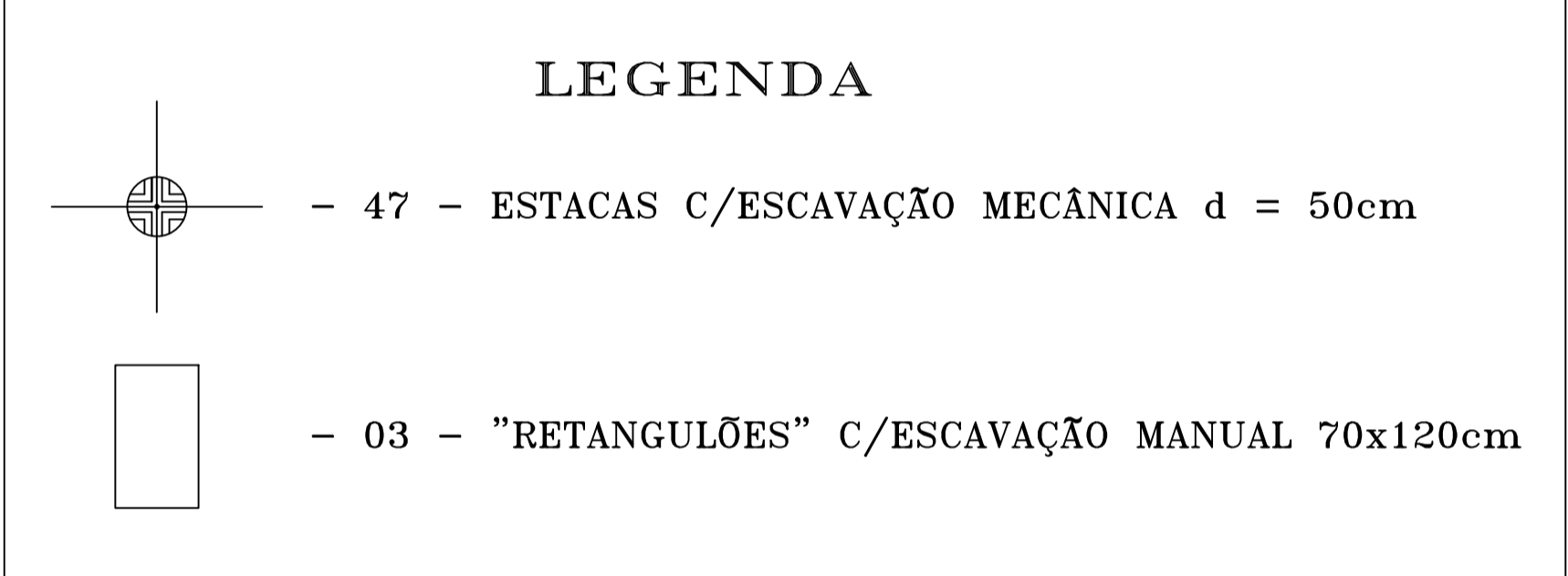
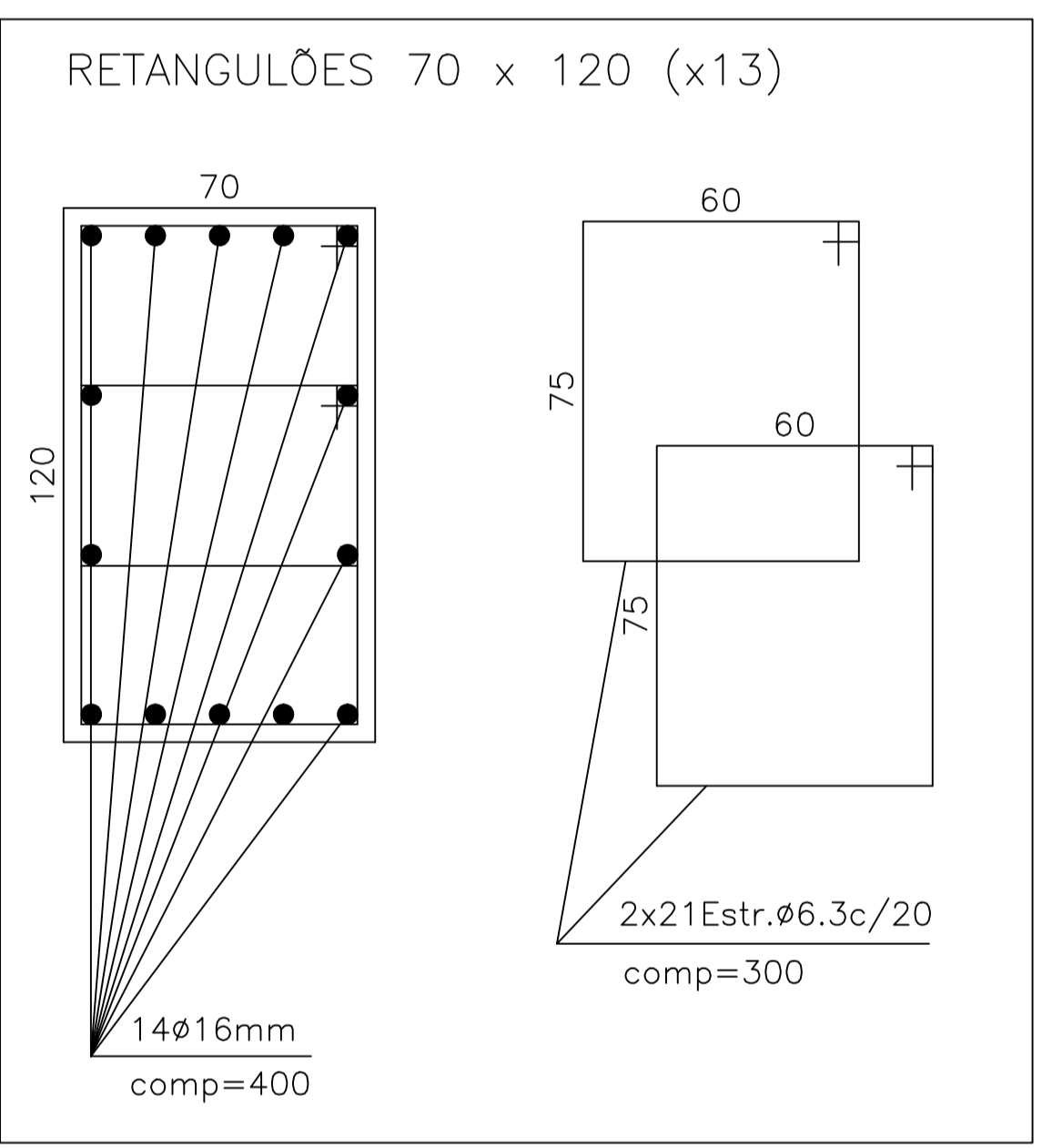
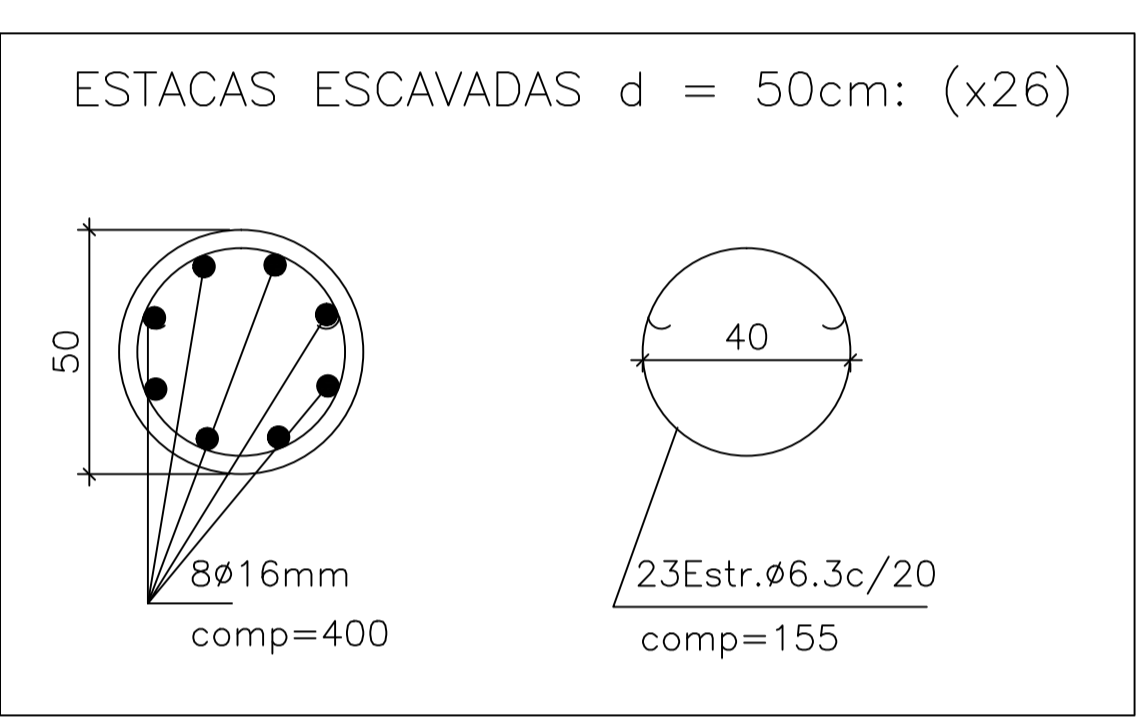
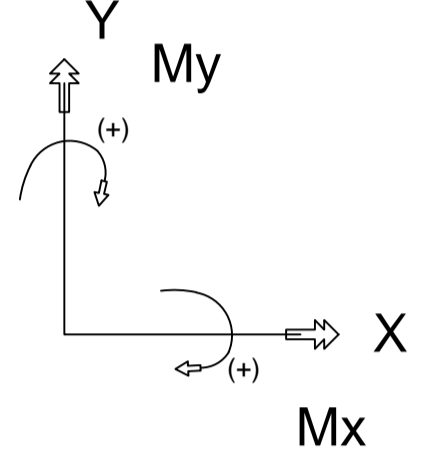


LIMITE TERRENO P407A 6tf 2xd=50 L=8m PC1 12tf 2xd=50 L=8m PC2 11tf 2xd=50 L=8m PC3 9tf 2xd=50 L=8m PC4 23tf 2xd=50 L=8m PC5 41tf 3xd=50 L=8m LIMITE TERRENO PC8 18tf 2xd=50 L=8m PC9 20tf 2xd=50 L=8m

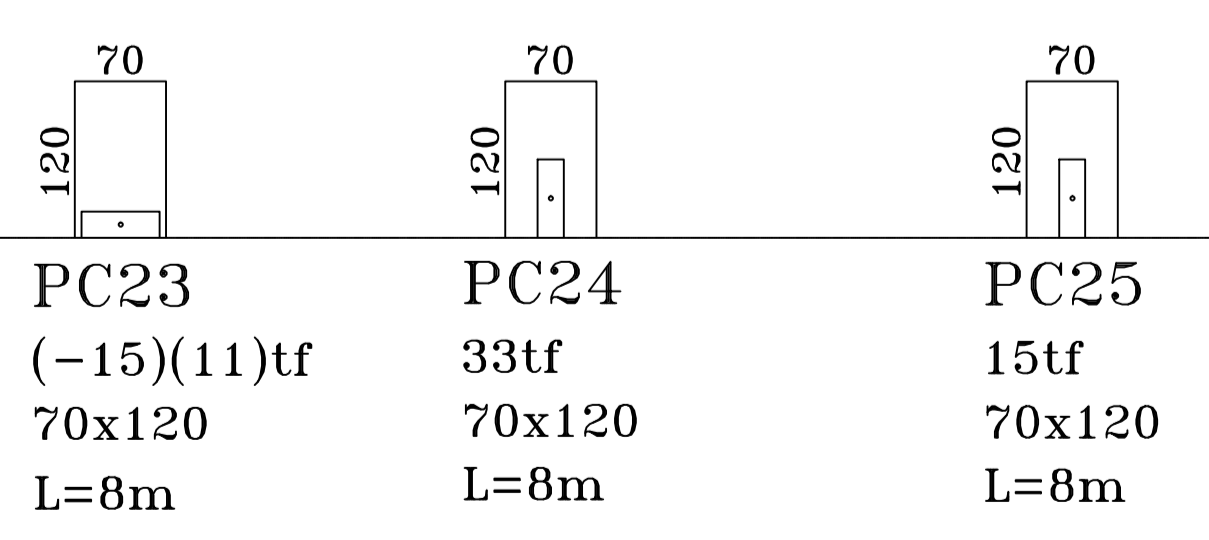
Σ Fx = 0 Σ Fy = 0 Σ Mx = 0 Σ My = 0

Elem Empuxo (1)					Elem Empuxo (2)					Elem Empuxo (3)					Elem								
	Fz	Fx	Fy	My		Fz	Fx	Fy	My		Fz	Fx	Fy	My		Fz	Fx	Fy	My				
PC1	0	-1	0	0	-2	PC1	2	0	-9	11	0	PC1	0	0	0	0	PC1	12	0	-9	12	0	
PC2	0	-1	0	0	-2	PC2	2	0	-9	10	0	PC2	0	0	0	0	PC2	11	0	-9	10	0	
PC3	0	-1	0	0	-2	PC3	-5	0	-8	7	0	PC3	0	0	0	0	PC3	9	0	0	0	0	
PC4	0	-1	0	0	-2	PC4	-26	0	-8	4	0	PC4	0	0	0	0	PC4	23	-1	0	0	-2	
PC5	0	-1	0	0	0	PC5	31	0	-10	23	0	PC5	0	0	0	0	PC5	41	0	-10	23	0	
PC6	4	-4	0	0	-1	PC6	-5	0	-4	1	-1	PC6	1	0	0	-1	PC6	18	-4	0	1	-2	
PC8	1	-1	0	-1	0	PC8	-6	0	-11	13	0	PC8	1	0	0	0	PC8	18	0	0	-3	0	
PC9	-2	-2	1	-3	0	PC9	6	0	-17	14	0	PC9	-2	0	1	-2	PC9	20	0	-18	13	0	
PC10	-2	-16	0	0	-14	PC10	1	1	-2	1	2	PC10	1	0	0	-1	PC10	14	1	0	-1	1	
PC11	-3	-19	0	0	-22	PC11	0	0	-1	1	1	PC11	0	0	0	-1	PC11	14	1	-1	1	0	
PC12	0	-20	0	0	-23	PC12	0	0	-1	1	0	PC12	0	0	0	-1	PC12	14	-20	0	0	-27	
PC13	1	-19	0	0	-23	PC13	0	0	-1	1	0	PC13	0	0	0	-1	PC13	15	-20	0	0	-26	
PC14	1	-19	0	0	-23	PC14	0	0	-1	1	0	PC14	0	0	0	-1	PC14	14	-20	0	0	-26	
PC15	0	-19	0	0	-23	PC15	0	0	0	1	0	PC15	0	0	0	-1	PC15	14	-19	0	0	-24	
PC16	0	-19	0	0	-23	PC16	0	0	0	1	0	PC16	0	0	0	-1	PC16	14	0	0	1	-1	
PC17	0	-19	0	0	-23	PC17	0	0	0	1	0	PC17	0	0	0	-1	PC17	14	-19	0	0	-24	
PC18	1	-19	0	0	-23	PC18	0	0	0	1	0	PC18	0	0	0	-1	PC18	14	-20	0	0	-26	
PC19	1	-19	0	0	-23	PC19	0	0	0	1	0	PC19	0	0	0	1	PC19	15	-20	0	0	-26	
PC20	0	-20	0	0	-23	PC20	0	0	0	1	0	PC20	0	0	1	-1	PC20	14	-20	0	0	-27	
PC21	-2	-19	0	0	-22	PC21	0	0	0	1	0	PC21	0	0	1	-1	PC21	14	1	1	-1	0	
PC22	-3	-16	0	0	-14	PC22	1	0	0	1	1	PC22	0	1	2	-1	PC22	14	1	0	1	1	
PC23	1	-2	0	0	-5	PC23	-3	0	0	0	0	PC23	-15	0	6	-4	PC23	11	-2	0	0	-5	
PC24	0	-2	0	1	0	PC24	1	0	0	0	0	PC24	21	0	18	-23	0	PC24	33	0	18	-23	0
PC25	-1	-3	-1	2	0	PC25	-3	0	-1	2	0	PC25	1	0	17	-13	0	PC25	15	0	17	-12	0
PC26	3	-5	0	0	-4	PC26	1	0	0	1	0	PC26	-7	0	4	0	-1	PC26	18	-5	0	-1	-5
P407A	1	-1	0	0	-2	P407A	1	0	-8	11	0	P407A	0	0	0	0	0	P407A	6	0	-8	12	0

Usa-se: $\sigma_{adm} = 16 \text{ MPa}$
 $A_{estaca} = 1,81 \text{ m}^2$ (Armação: 23Estr. $\phi 6,3 \text{ c}/20$)
 $A_{retangulo} = 0,91 \text{ m}^2$ (Armação: 14Estr. $\phi 16 \text{ mm}$)
 3 - Momentos em t.m
 4 - Sistema de coordenadas GLOBAL
 5 - Todos os valores multiplicados por 1.10
 A B C D E F G H I J K L M N O P Q R S T U V W X Y Z



- NOTAS :**
- 1) São previstas aqui estacas escavadas com equipamento mecânico, e, poços escavados manualmente com seção em planta na forma de retângulos, os chamados "retângulos".
 - 2) Adotar concreto com $F_{ck} = 20 \text{ MPa}$, brita 1, abatimento no "slump test" = 10cm.
 - 3) Fazer a marcação das estacas e "retângulos" a partir do desenho BL-C, 001-XXX, BLOCO C, LOCAÇÃO E CARGAS NOS PILARES do Projeto Estrutural.



Francisco Oliveira Filho
 CONSULTORIA E PROJETOS DE ENGENHARIA
 Fone : 9981 8805 Fax : 3387 4847

CLIENTE	Leuven Incorporadora Ltda
OBRA	Bloco Residencial
LOCAL	QNO 10 Área Especial P. Ceilândia/DF
ASSUNTO	Junta C: Cortina
RESPONS. TECNICO	FRANCISCO OLIVEIRA FILHO - ENG. CIVIL - CREA N. 1791/D - DF
DATA	Agosto/2013
DESENHO	FoF/CAD - 57/13
ESCALA	1:75
VISTO	